

Supplement of The Cryosphere, 12, 907–920, 2018
<https://doi.org/10.5194/tc-12-907-2018-supplement>
© Author(s) 2018. This work is distributed under
the Creative Commons Attribution 4.0 License.



Supplement of

Near-surface temperature inversion during summer at Summit, Greenland, and its relation to MODIS-derived surface temperatures

Alden C. Adolph et al.

Correspondence to: Alden C. Adolph (adolph1@stolaf.edu)

The copyright of individual parts of the supplement might differ from the CC BY 4.0 License.

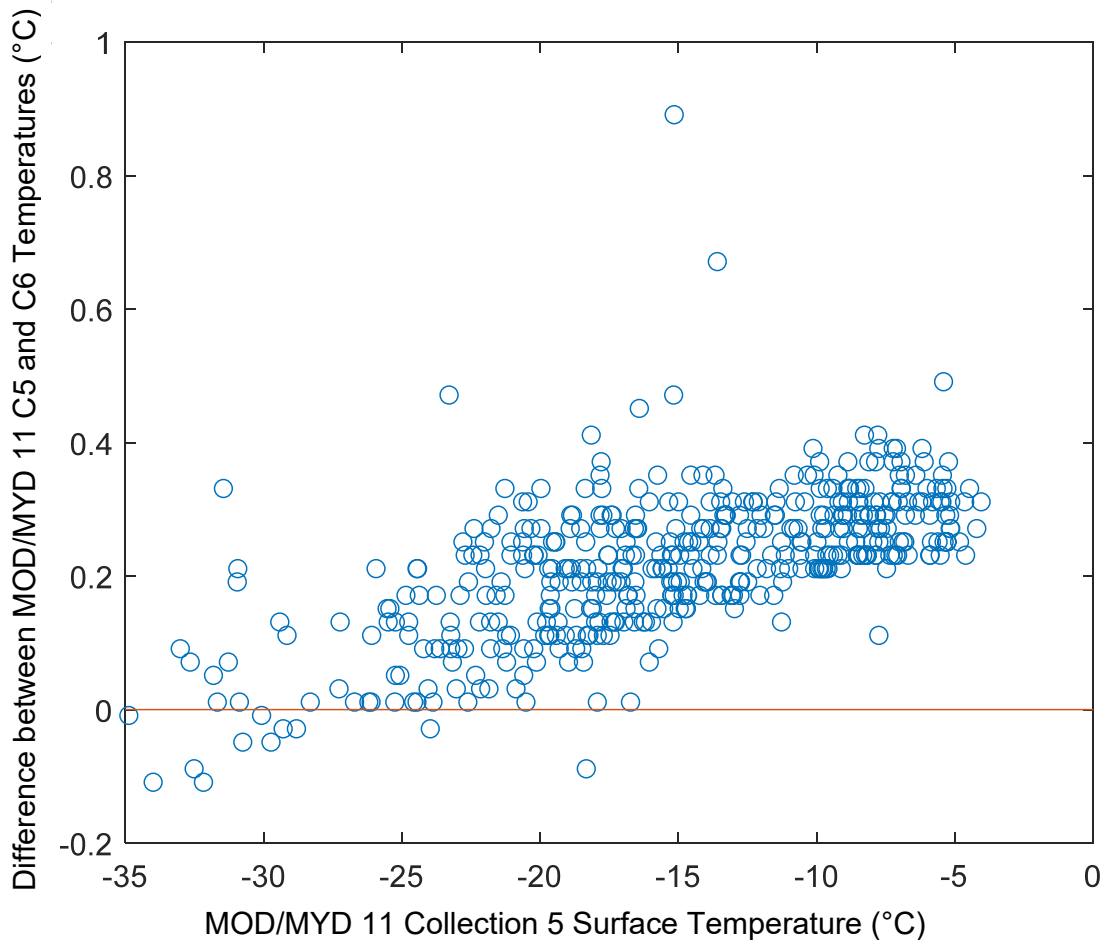


Figure S1. Difference between C5 and C6 MOD/MYD11 temperatures during our study window. Positive values indicate that C6 temperatures are higher than C5 temperatures. There is a mean difference is 0.22°C and a trend of larger difference between C6 and C5 at higher temperatures.

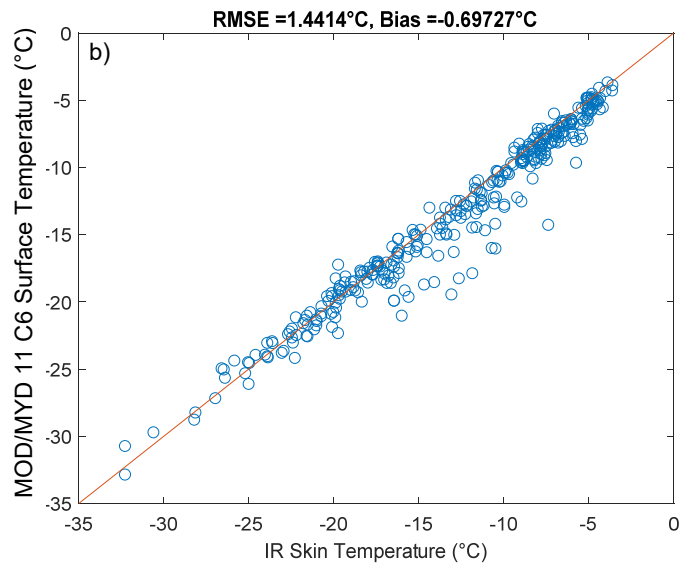
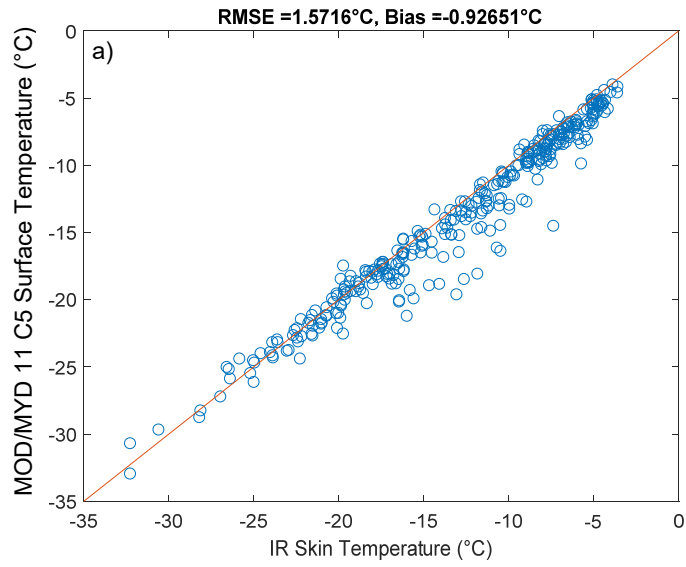


Figure S2. Comparison of a) C5 and b) C6 MOD/MYD11 temperatures to our in situ IR skin temperature measurements when only data that has been marked as cloud free by both C5 and C6 products are considered (n=341).