

Supplement of The Cryosphere, 12, 3287–3292, 2018
<https://doi.org/10.5194/tc-12-3287-2018-supplement>
© Author(s) 2018. This work is distributed under
the Creative Commons Attribution 4.0 License.



Supplement of

Brief communication: Recent changes in summer Greenland blocking captured by none of the CMIP5 models

Edward Hanna et al.

Correspondence to: Edward Hanna (ehanna@lincoln.ac.uk)

The copyright of individual parts of the supplement might differ from the CC BY 4.0 License.

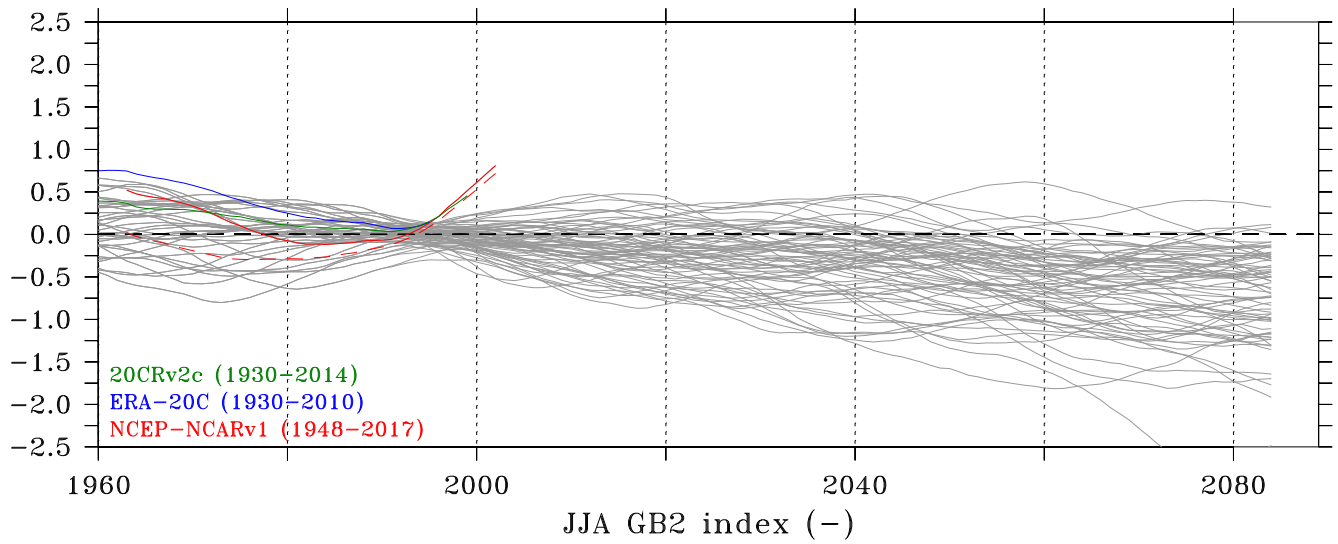


Figure S1. Same as Figure 1 but using a 30-year running mean.

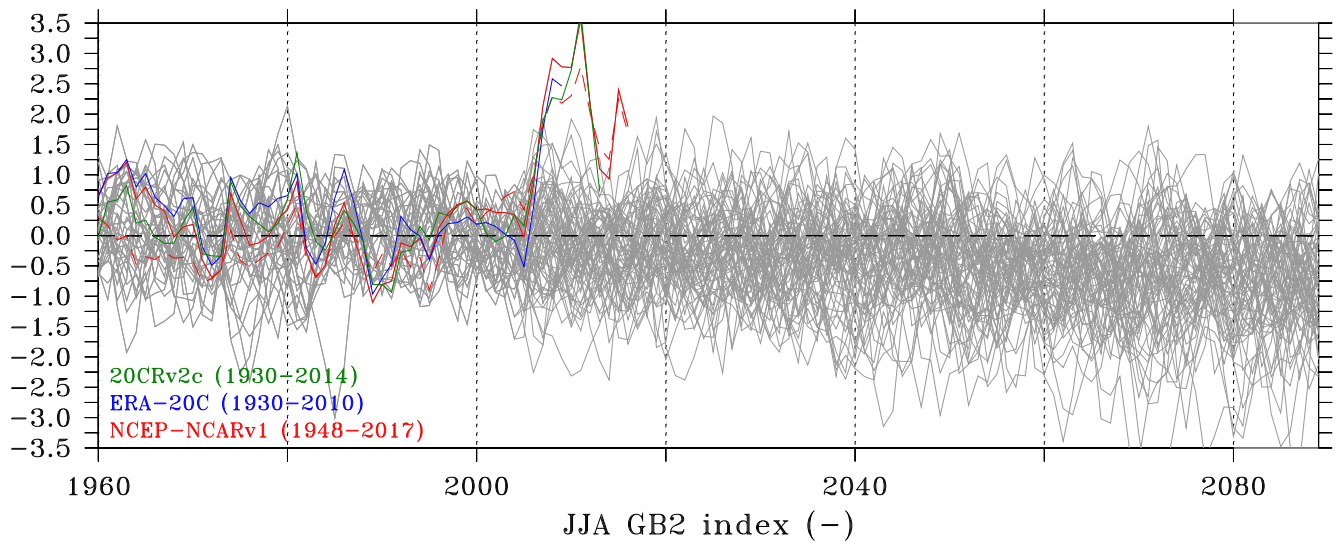


Figure S2. Same as Figure 1 but using a 3-year running mean.

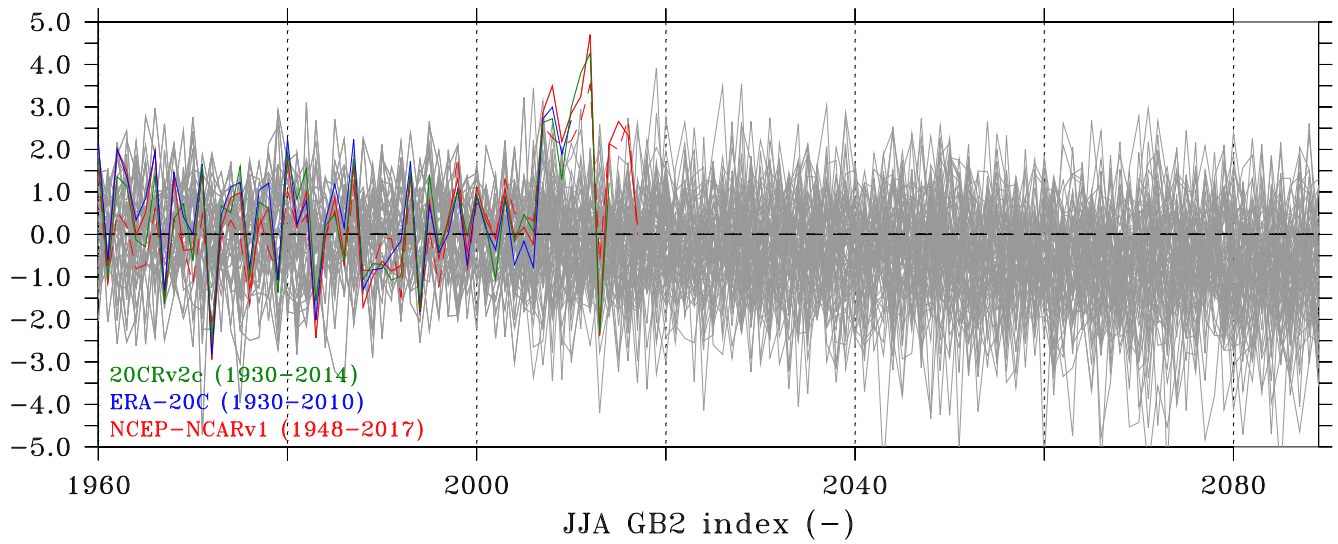


Figure S3. Same as Figure 1 but using unsmoothed data.

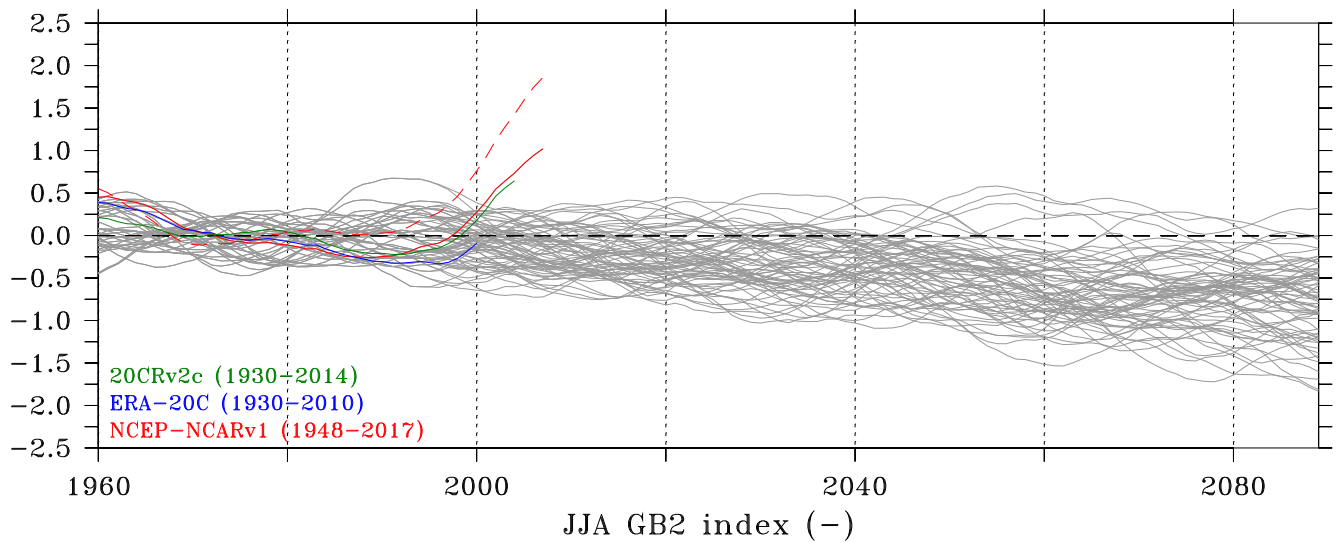


Figure S4. Same as Figure 1 in paper but using 1960–1990 as the reference period.

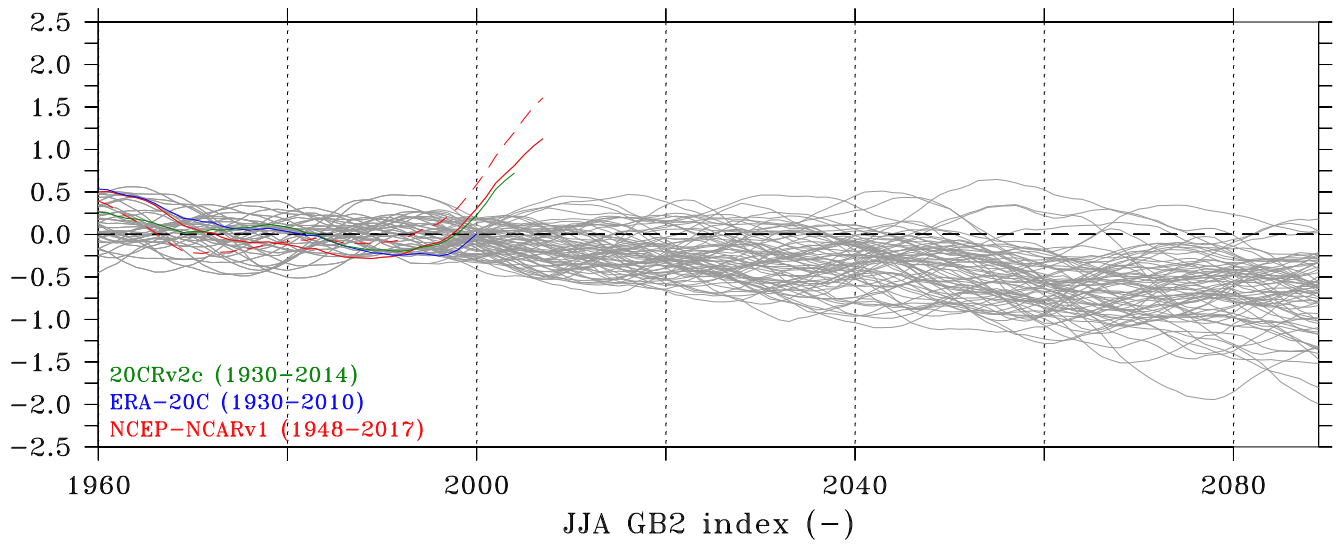


Figure S5. Same as Figure 1 in paper but using 1960–2005 as the reference period.

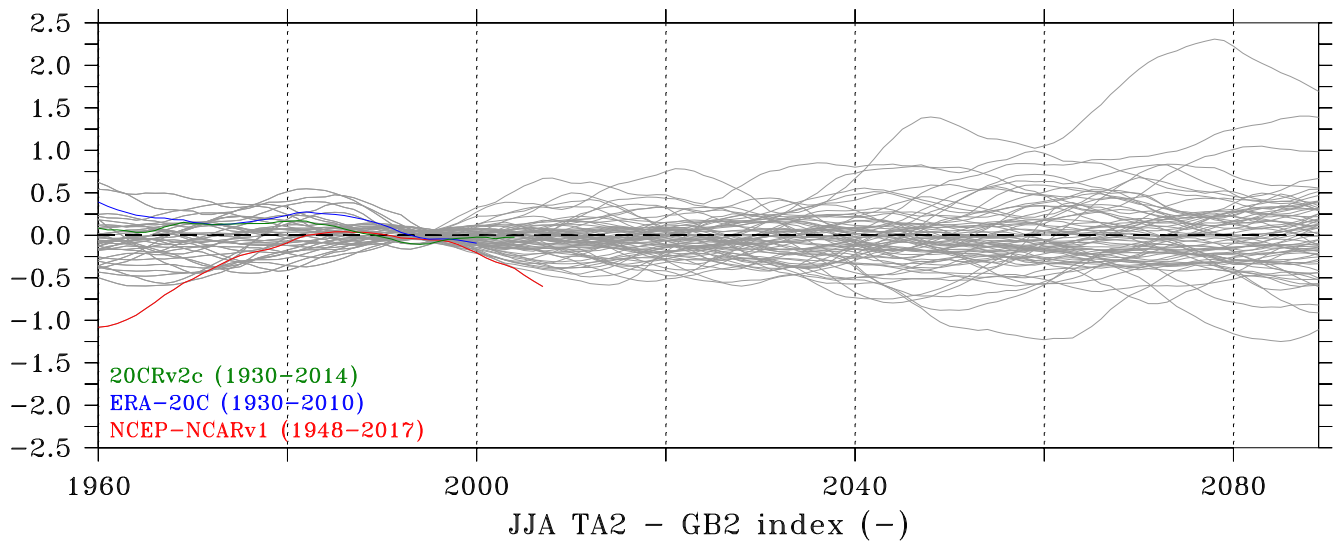


Figure S6. Time series of TA2 – GB2, which confirms that the post-2000 anomalies simulated by NCEP1 are out of range with respect to GCMs.

Table S1. List of the 36 CMIP5 global models (run r1i1p1) used in this study.

Model name	Model name
ACCESS1-0	GISS-E2-H
ACCESS1-3	GISS-E2-R-CC
bcc-csm1-1-m	GISS-E2-R
bcc-csm1-1	HadGEM2-AO
CanESM2	HadGEM2-CC
CCSM4	HadGEM2-ES
CESM1-BGC	inmcm4
CESM1-CAM5	IPSL-CM5A-LR
CMCC-CM	IPSL-CM5A-MR
CMCC-CMS	IPSL-CM5B-LR
CNRM-CM5	MIROC5
EC-EARTH	MIROC-ESM-CHEM
FGOALS-g2	MIROC-ESM
FIO-ESM	MPI-ESM-LR
GFDL-CM3	MPI-ESM-MR
GFDL-ESM2G	MRI-CGCM3
GFDL-ESM2M	NorESM1-ME
GISS-E2-H-CC	NorESM1-M