

Supplement of The Cryosphere, 12, 2821–2829, 2018
<https://doi.org/10.5194/tc-12-2821-2018-supplement>
© Author(s) 2018. This work is distributed under
the Creative Commons Attribution 4.0 License.



Supplement of

Persistent tracers of historic ice flow in glacial stratigraphy near Kamb Ice Stream, West Antarctica

Nicholas Holschuh et al.

Correspondence to: Nicholas Holschuh (holschuh@uw.edu)

The copyright of individual parts of the supplement might differ from the CC BY 4.0 License.

Supporting Information: Persistent Tracers of Historic Ice Flow in Glacial Stratigraphy near Kamb Ice Stream, West Antarctica

Nicholas Holschuh¹, Knut Christianson¹, Howard Conway¹, Robert W. Jacobel², Brian C. Welch²

¹Department of Earth and Space Sciences, University of Washington, Johnson Hall Rm-070, Box 351310, 4000 15th Avenue NE, Seattle, Washington 98195-1310

²Department of Physics, St. Olaf College, 1520 St. Olaf Avenue, Northfield, MN 55057

Correspondence to: Nicholas Holschuh (holschuh@uw.edu)

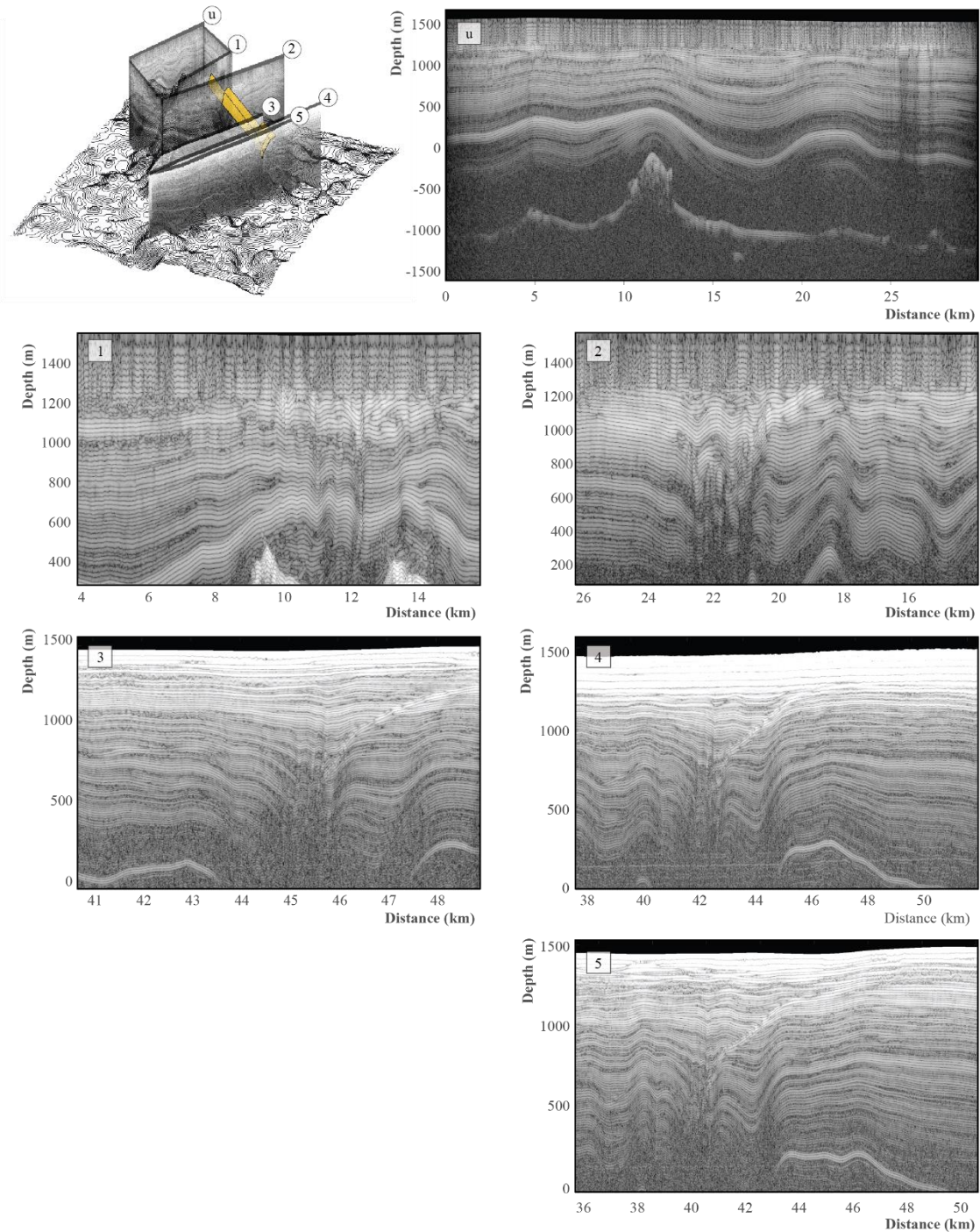


Figure S1: Radargrams capturing the evolution of the stratigraphic unconformity as it propagates downstream from Mt. Resnik. Panel (u) shows radar data immediately upstream of the subglacial volcano, showing no indication of an unconformity within the englacial layering. Panels (1-5) move progressively further downstream. Panel (1) shows the incipient structure and distorted layers that exist on the hanging wall side of the unconformity.