

Supplement of The Cryosphere, 12, 1367–1386, 2018
<https://doi.org/10.5194/tc-12-1367-2018-supplement>
© Author(s) 2018. This work is distributed under
the Creative Commons Attribution 4.0 License.



Supplement of

**Relative performance of empirical and physical models
in assessing the seasonal and annual glacier surface
mass balance of Saint-Sorlin Glacier (French Alps)**

Marion Réveillet et al.

Correspondence to: Marion Réveillet (marion.reveillet@cea.fr)

The copyright of individual parts of the supplement might differ from the CC BY 4.0 License.

Supplementary material

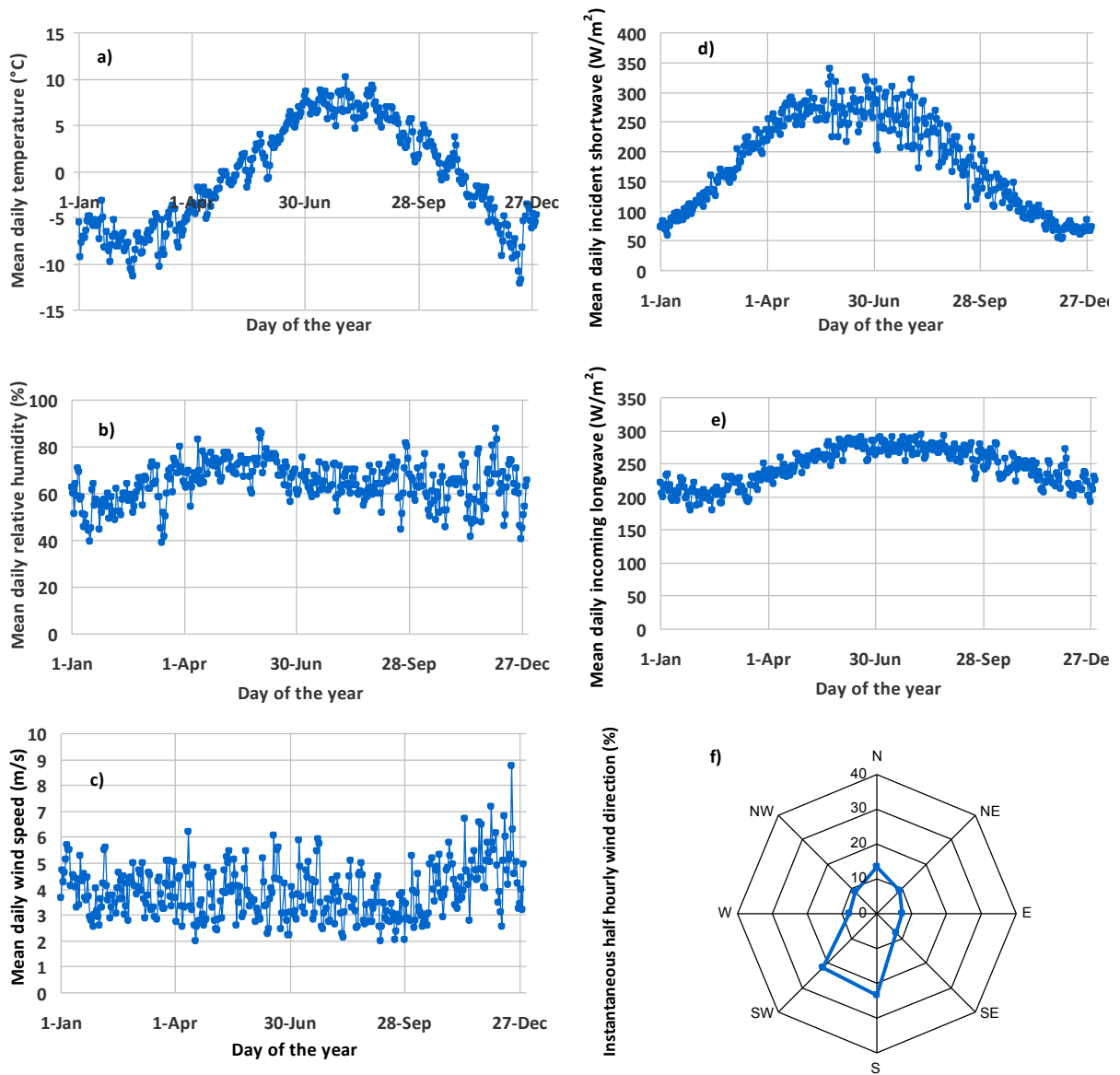


Figure S1: Daily means of (a) temperature (°C), (b) relative humidity (%), (c) wind speed (m/s), (d) incident shortwave (W/m²), (e) incoming longwave (W/m²), (f) percentage of instantaneous half hourly wind direction data in each direction (%). Data are calculated on the 2006-2013 period, at AWS_m (2720 m)