

Supplement of The Cryosphere, 10, 2043–2056, 2016
<http://www.the-cryosphere.net/10/2043/2016/>
doi:10.5194/tc-10-2043-2016-supplement
© Author(s) 2016. CC Attribution 3.0 License.



Supplement of

Grounding and calving cycle of Mertz Ice Tongue revealed by shallow Mertz Bank

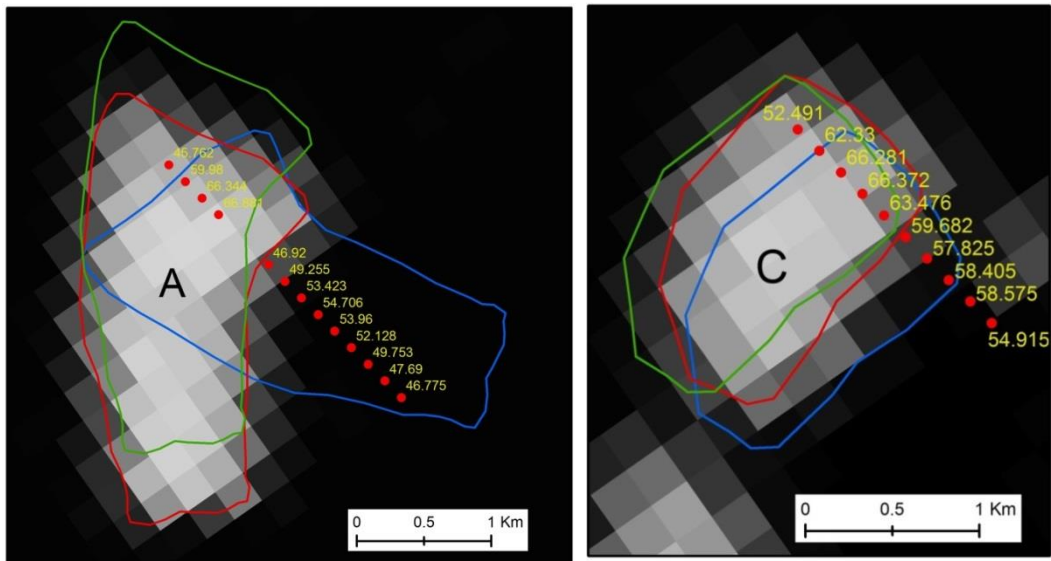
X. Wang et al.

Correspondence to: Xianwei Wang (wangxianwei0304@163.com) and Xiao Cheng (xcheng@bnu.edu.cn)

The copyright of individual parts of the supplement might differ from the CC-BY 3.0 licence.

1

Supplementary Figures

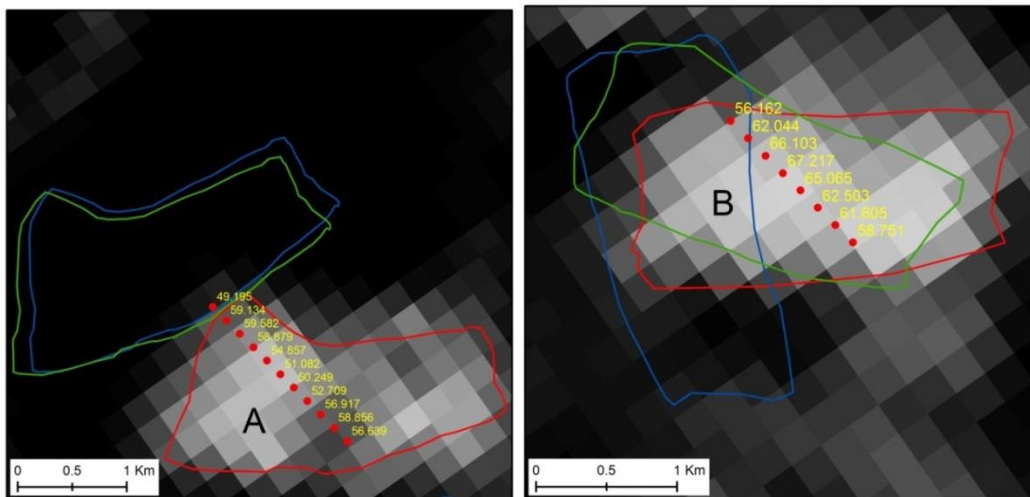


2

3

(a)

(b)



4

5

(c)

(d)

6 **S-Figure 1.** Freeboard extraction results from ICESat/GLAS for icebergs ‘A’, ‘B’ and ‘C’ in
7 2006 and 2008 respectively. (a) and (b) correspond to freeboard measurements from icebergs ‘A’
8 and ‘C’ respectively on February 23, 2006 (2006054), with background image from MODIS
9 captured on 2006054. (c) and (d) correspond to freeboard measurements from icebergs ‘A’ and
10 ‘B’ respectively on February 18, 2008 (2008049), with background image from MODIS captured

11 on 2008050. The locations of each iceberg in the different observation dates are indicated with
12 different colored polygons, the legend of which is the same as what is used in Fig. 4. Inside each
13 sub-figure, different icebergs are marked with 'A', 'B' and 'C' respectively and iceberg
14 freeboard results in unit of meter are marked in yellow.

15