

Supplement of The Cryosphere, 10, 2027–2041, 2016
<http://www.the-cryosphere.net/10/2027/2016/>
doi:10.5194/tc-10-2027-2016-supplement
© Author(s) 2016. CC Attribution 3.0 License.



Supplement of

Sea-ice indicators of polar bear habitat

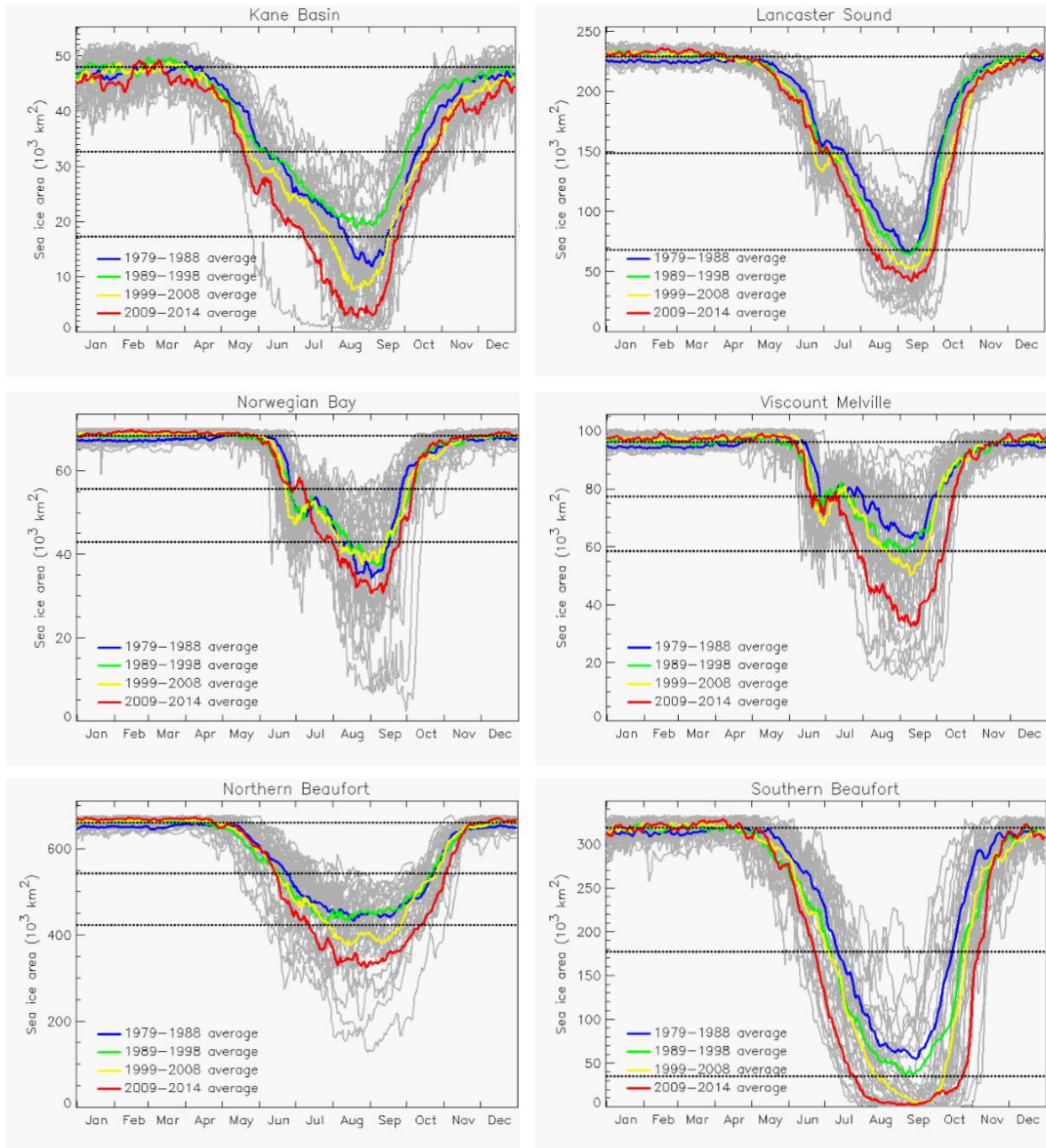
Harry L. Stern and Kristin L. Laidre

Correspondence to: Harry L. Stern (harry@apl.washington.edu)

The copyright of individual parts of the supplement might differ from the CC-BY 3.0 licence.

Supplement

S1. Daily Sea-Ice Area



5 **Figure S1.** Daily sea-ice area, January-December, 1979-2014 (gray curves), by region (all depths). Colored curves are decadal averages as indicated. Upper horizontal dotted line is average sea-ice area in March; lower horizontal dotted line is average sea-ice area in September; middle horizontal dotted line is threshold for determining dates of spring sea-ice retreat and fall sea-ice advance. See Fig. 2 for Baffin Bay region. See Fig. 1 and Table 1 for locations of regions.

10

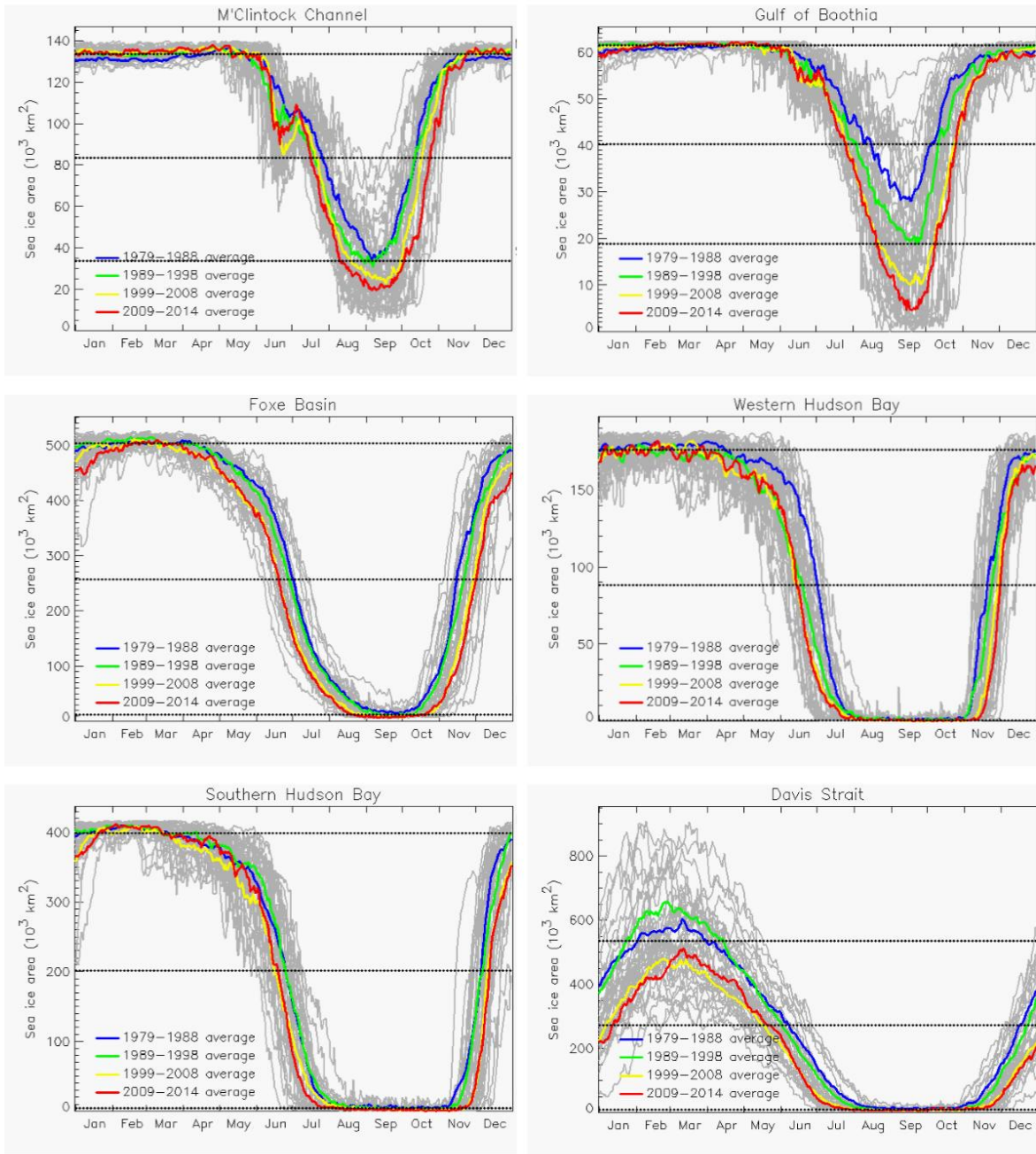
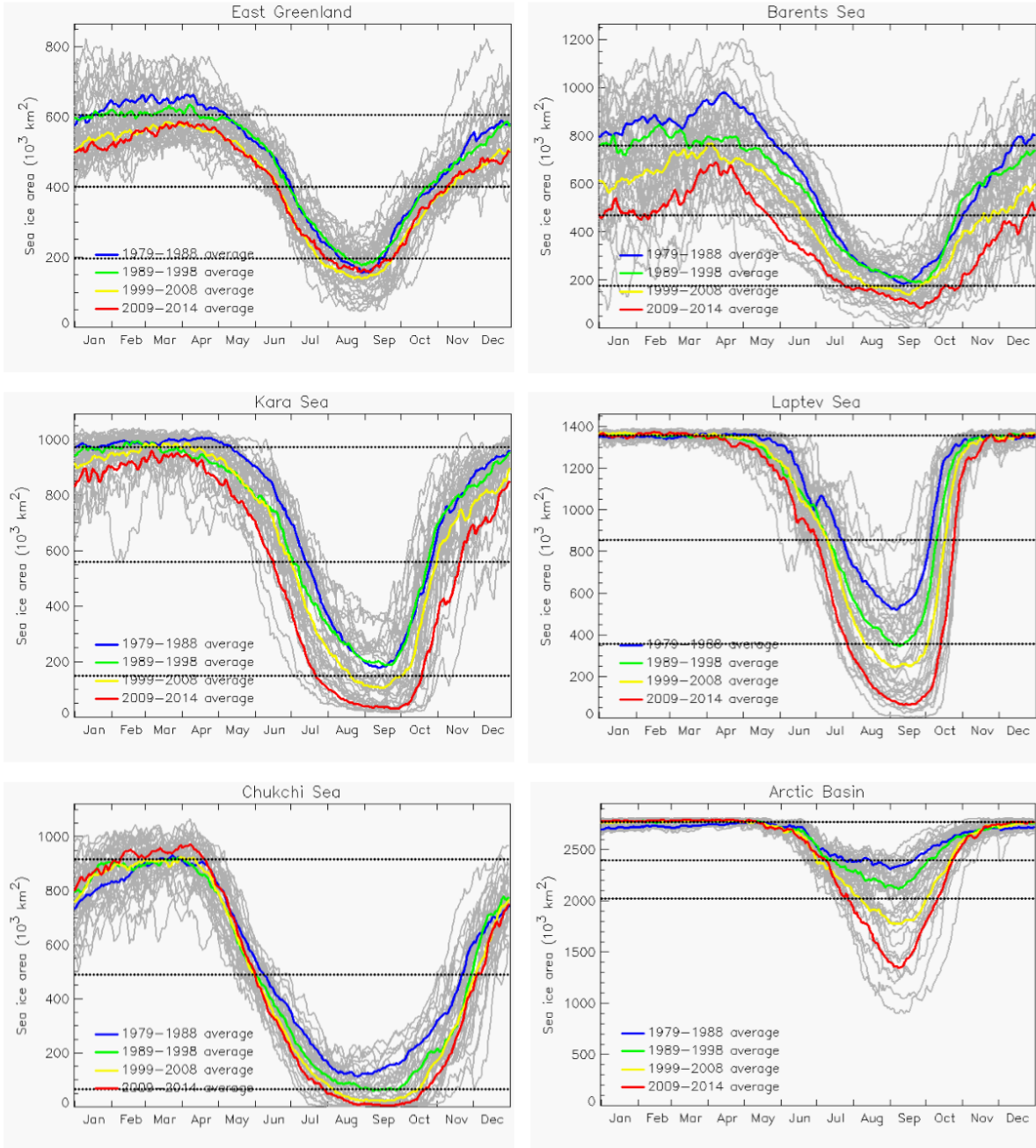


Figure S1 (continued). Daily sea-ice area by region.



15

Figure S1 (continued). Daily sea-ice area by region.

20 **S2. Dates of Sea-Ice Retreat and Advance**

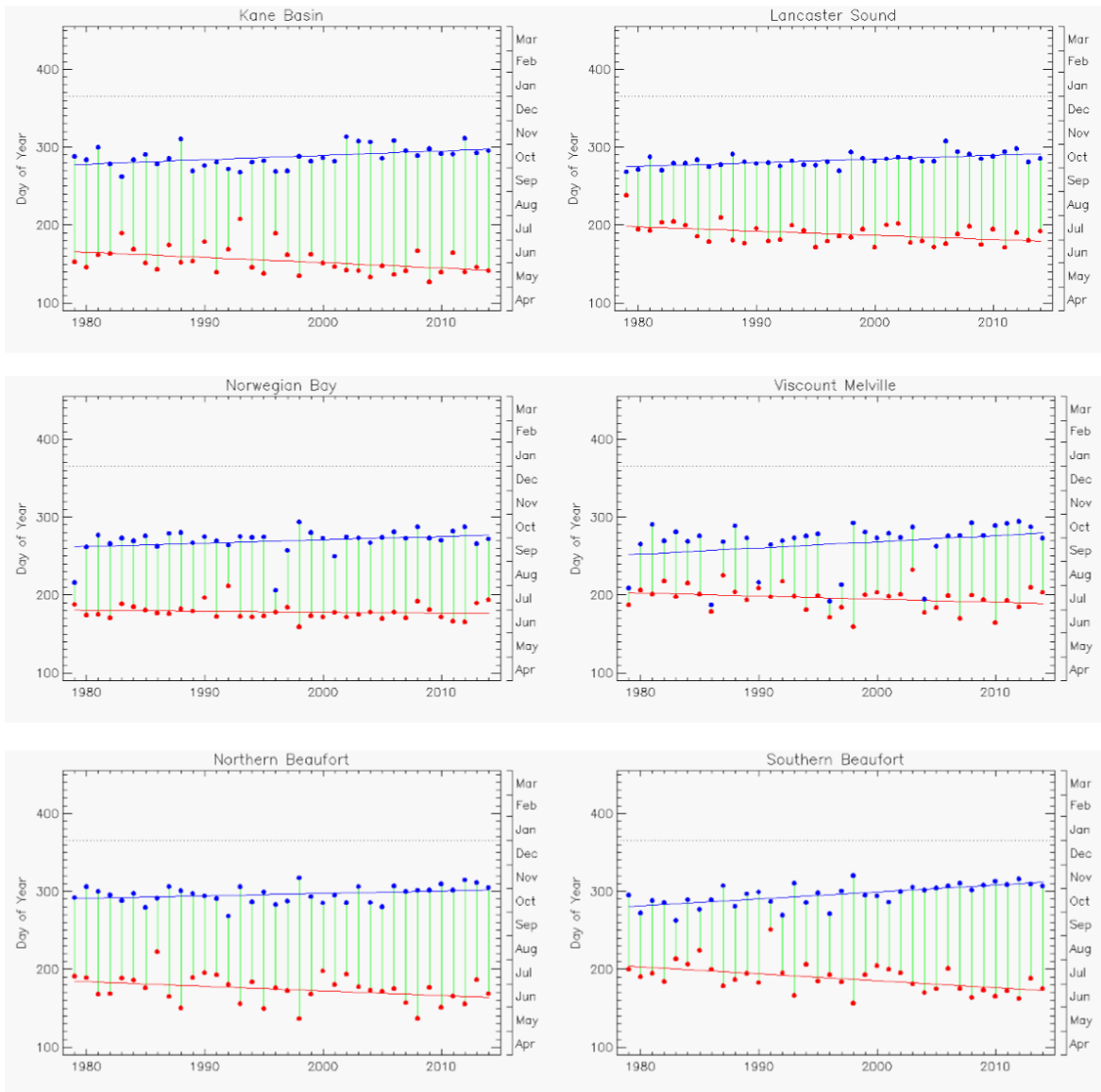


Figure S2. Dates of sea-ice retreat (red) and sea-ice advance (blue) for 1979-2014, by region (all depths). The red and blue lines are least-squares fits. The vertical green lines indicate the time interval between retreat and advance (i.e., length of summer season). See Fig. 4 for Baffin Bay region. See Table 3 for trends.

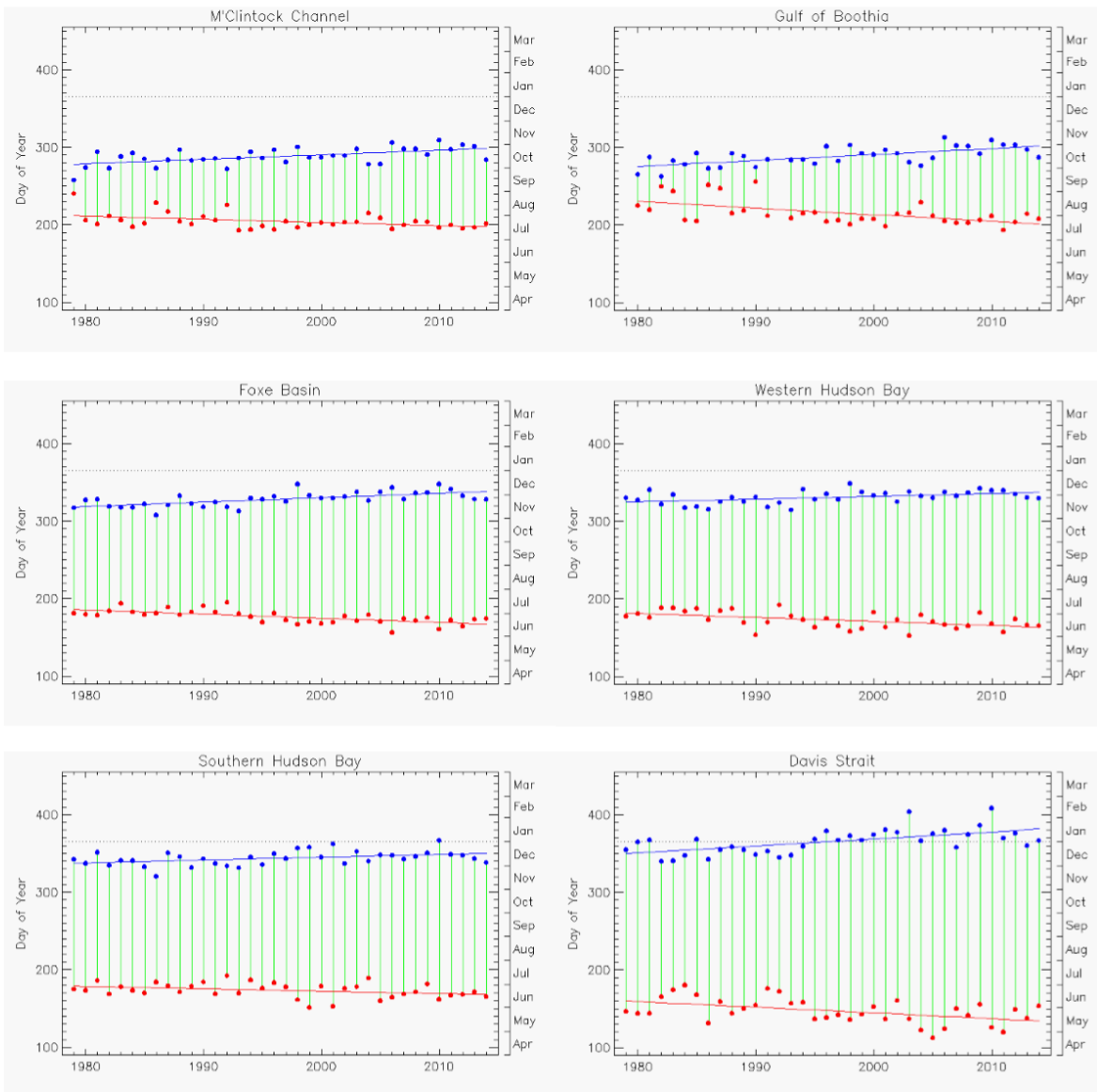
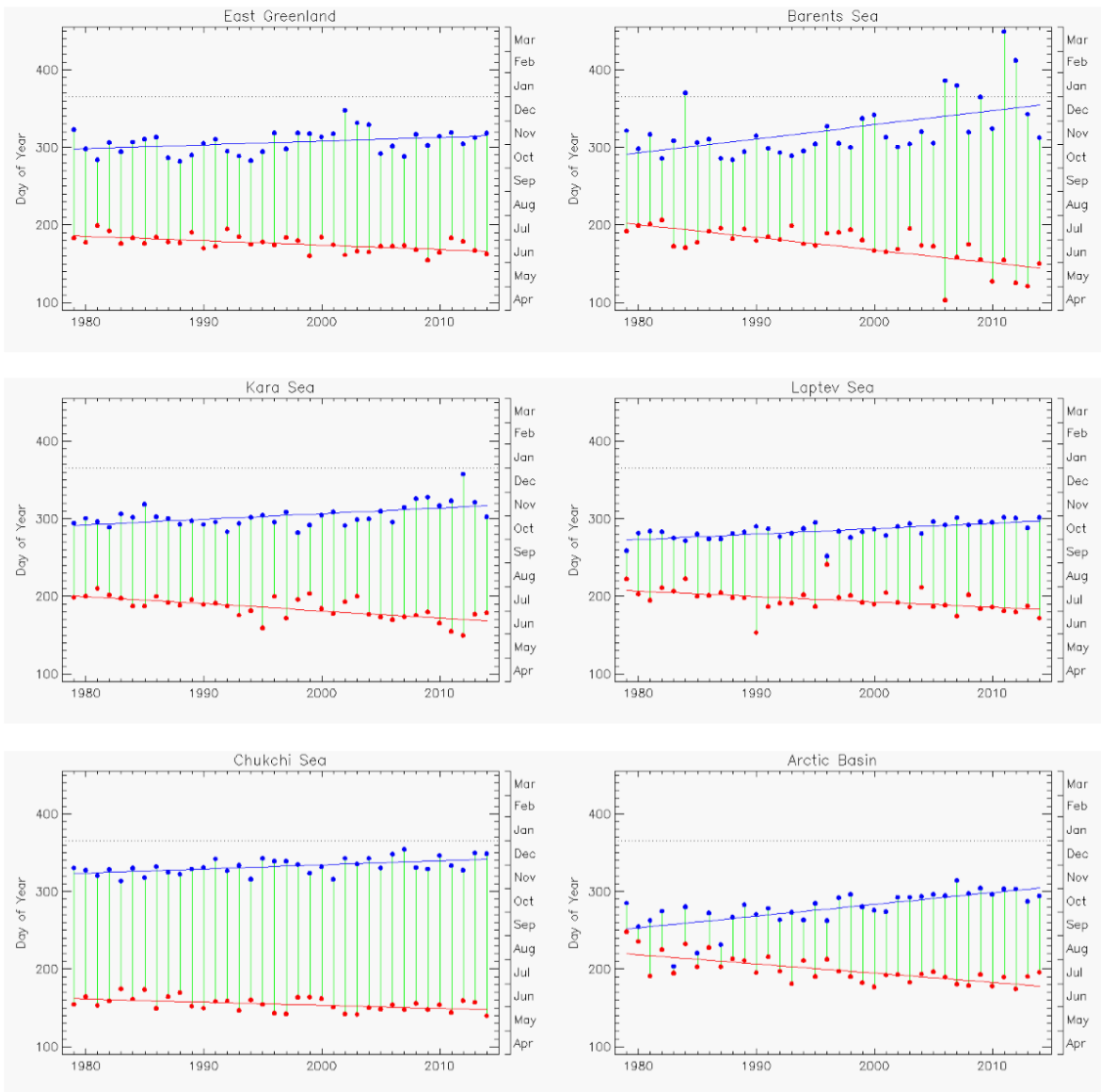


Figure S2 (continued). Dates of sea-ice retreat and advance, by region.



30

Figure S2 (continued). Dates of sea-ice retreat and advance, by region.

35 **S3. Length of the Summer Season**

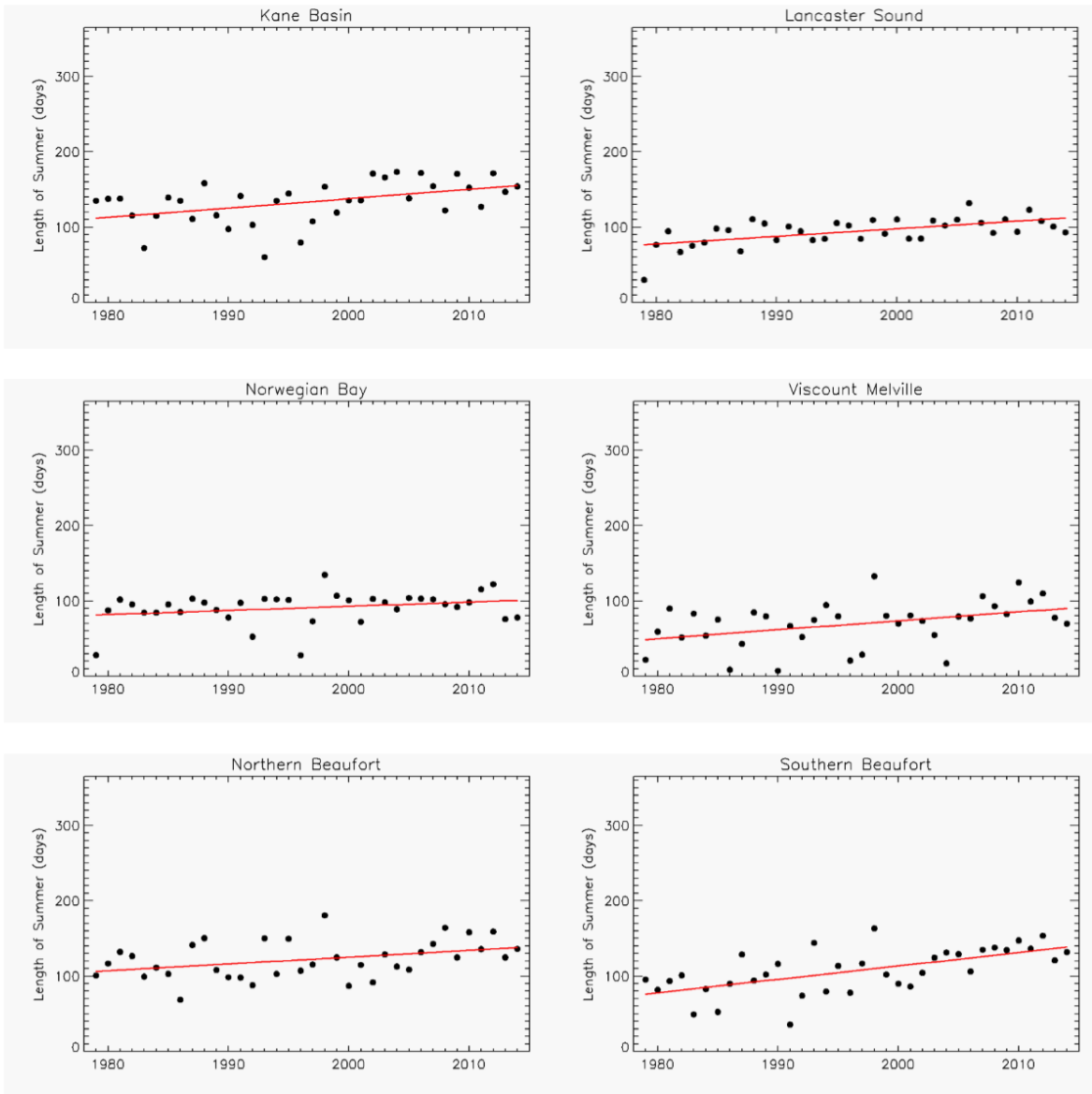


Figure S3. Length of the summer season (from spring sea-ice retreat to fall sea-ice advance) vs. year, by region (all depths), with least-squares line in red. See Fig. 5 for Baffin Bay region. See Table 3 for trends.

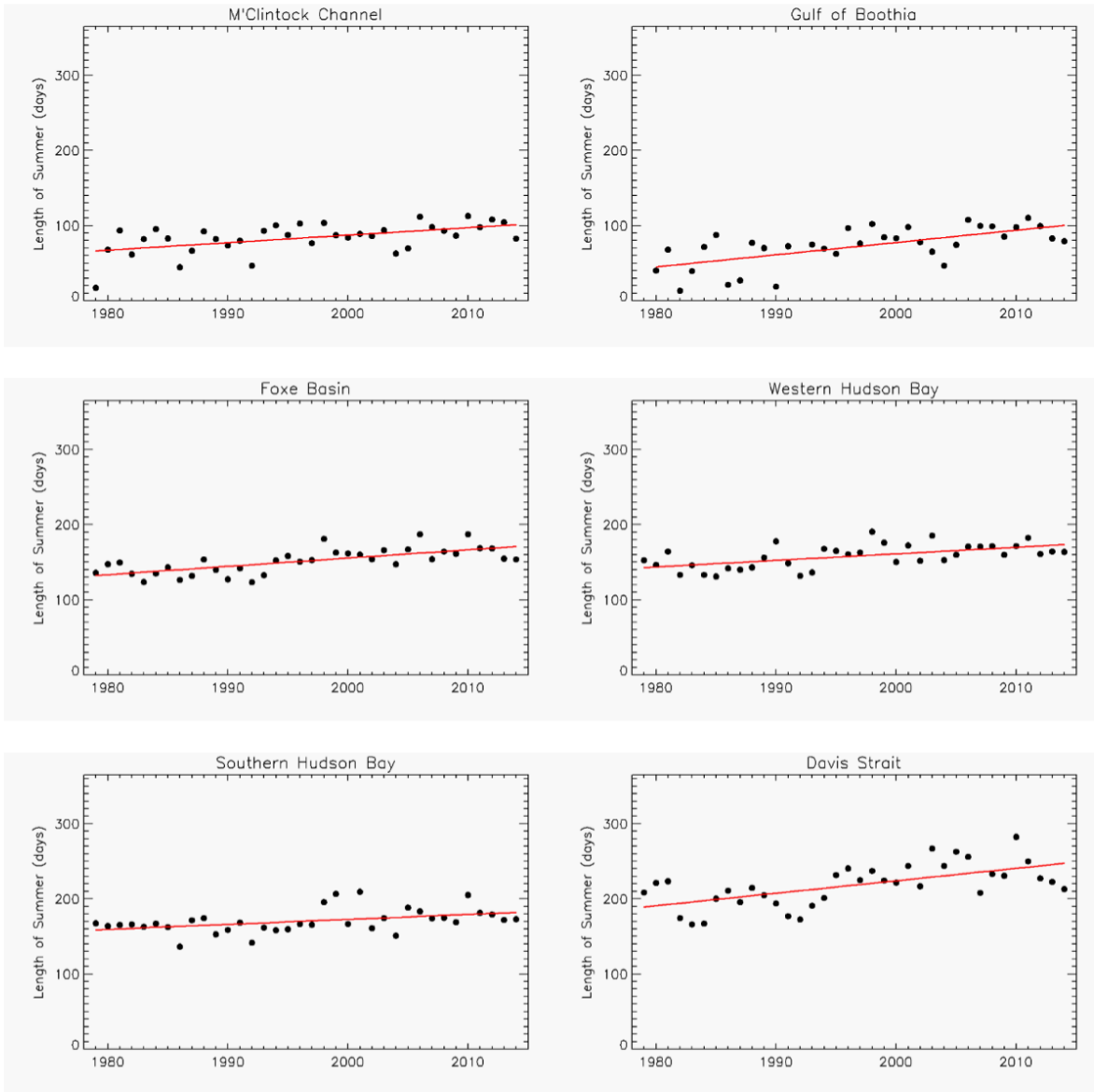
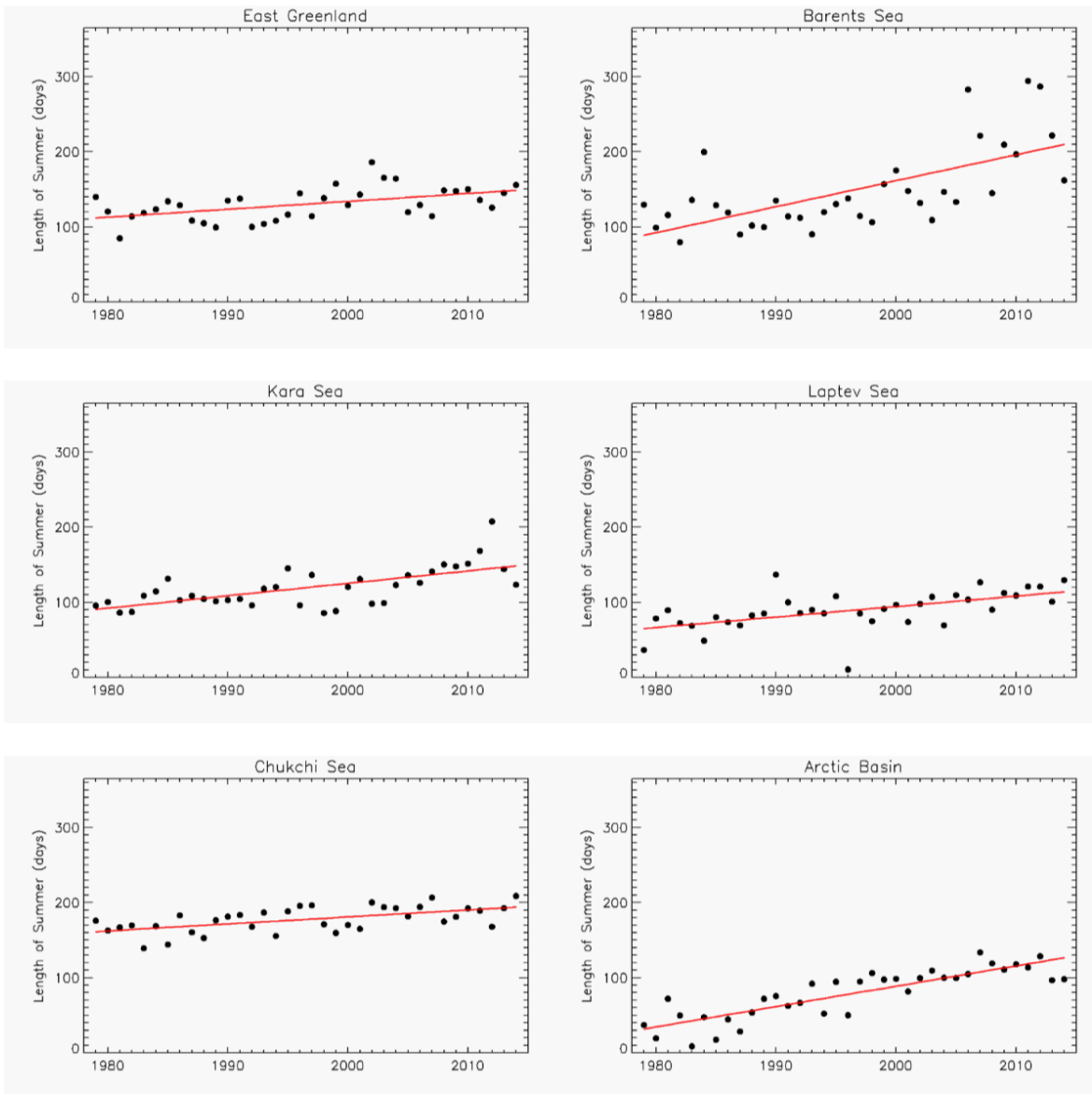
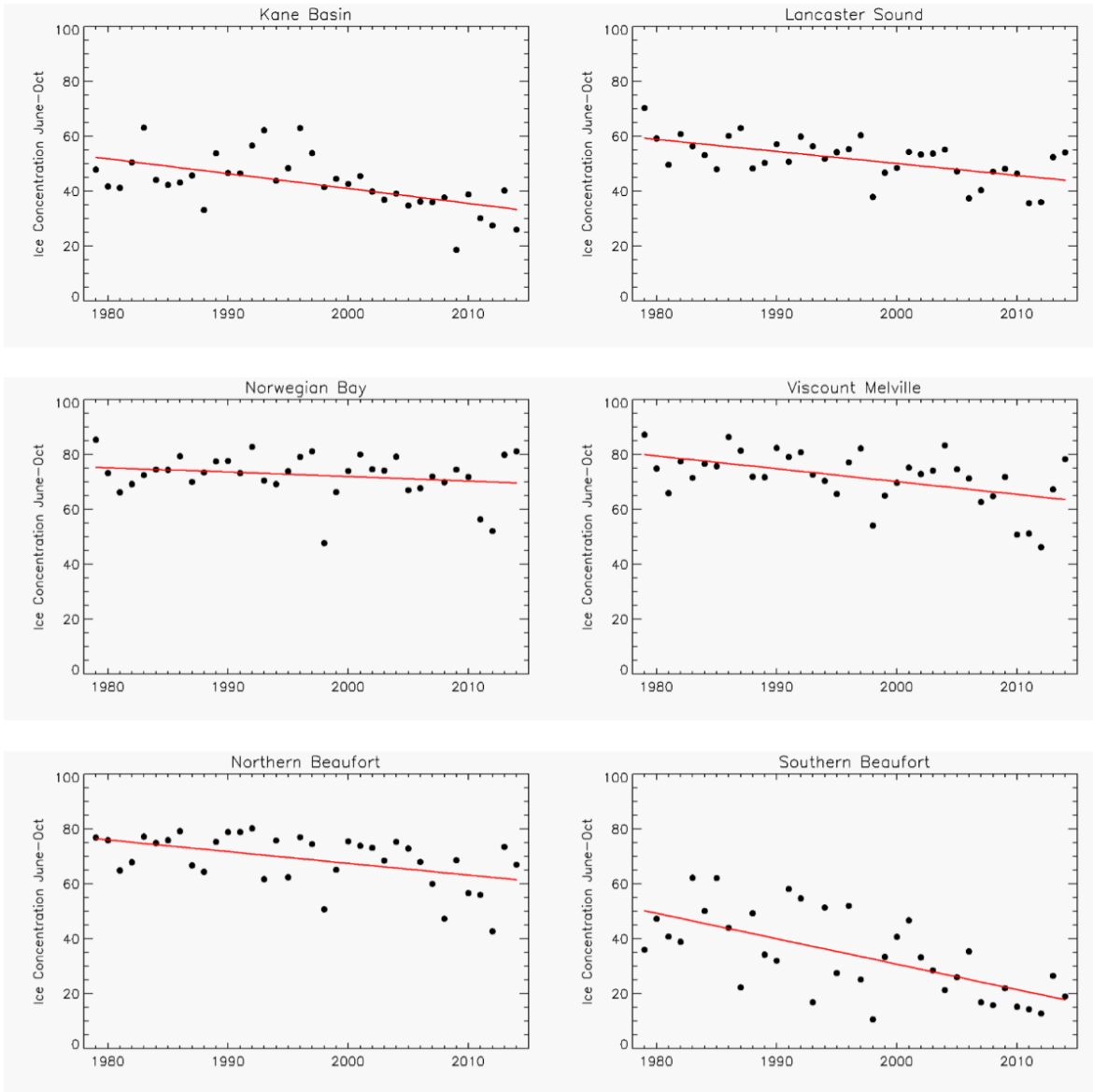


Figure S3 (continued). Length of the summer season, by region.



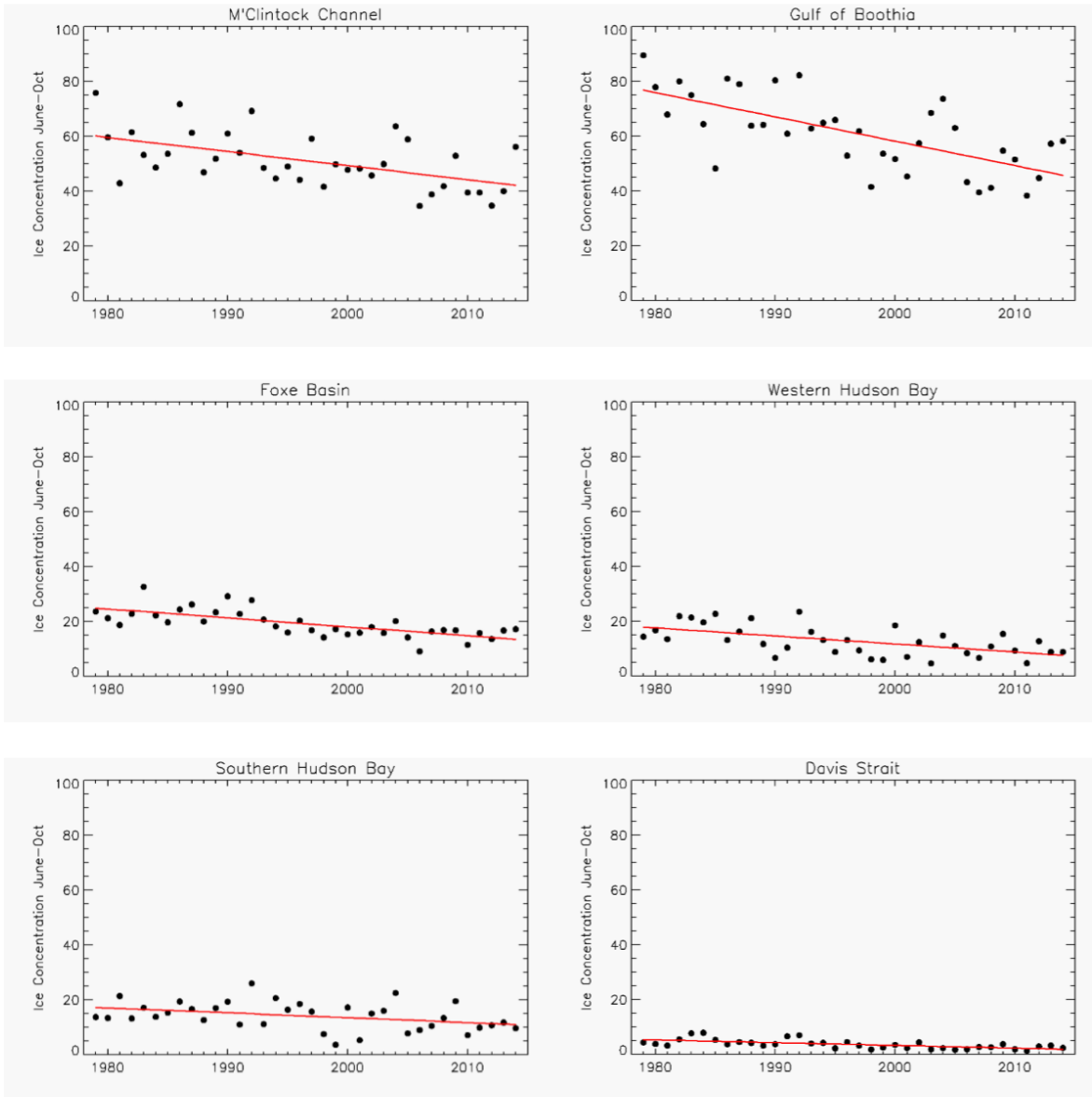
45 **Figure S3** (continued). Length of the summer season, by region.

S4. Summer Sea-Ice Concentration



50

Figure S4. Summer (June through October) sea-ice concentration vs. year, by region (all depths), with least-squares line in red. See Fig. 6 for Baffin Bay region. See Table 3 for trends.



55

Figure S4 (continued). Summer (June through October) sea-ice concentration, by region.

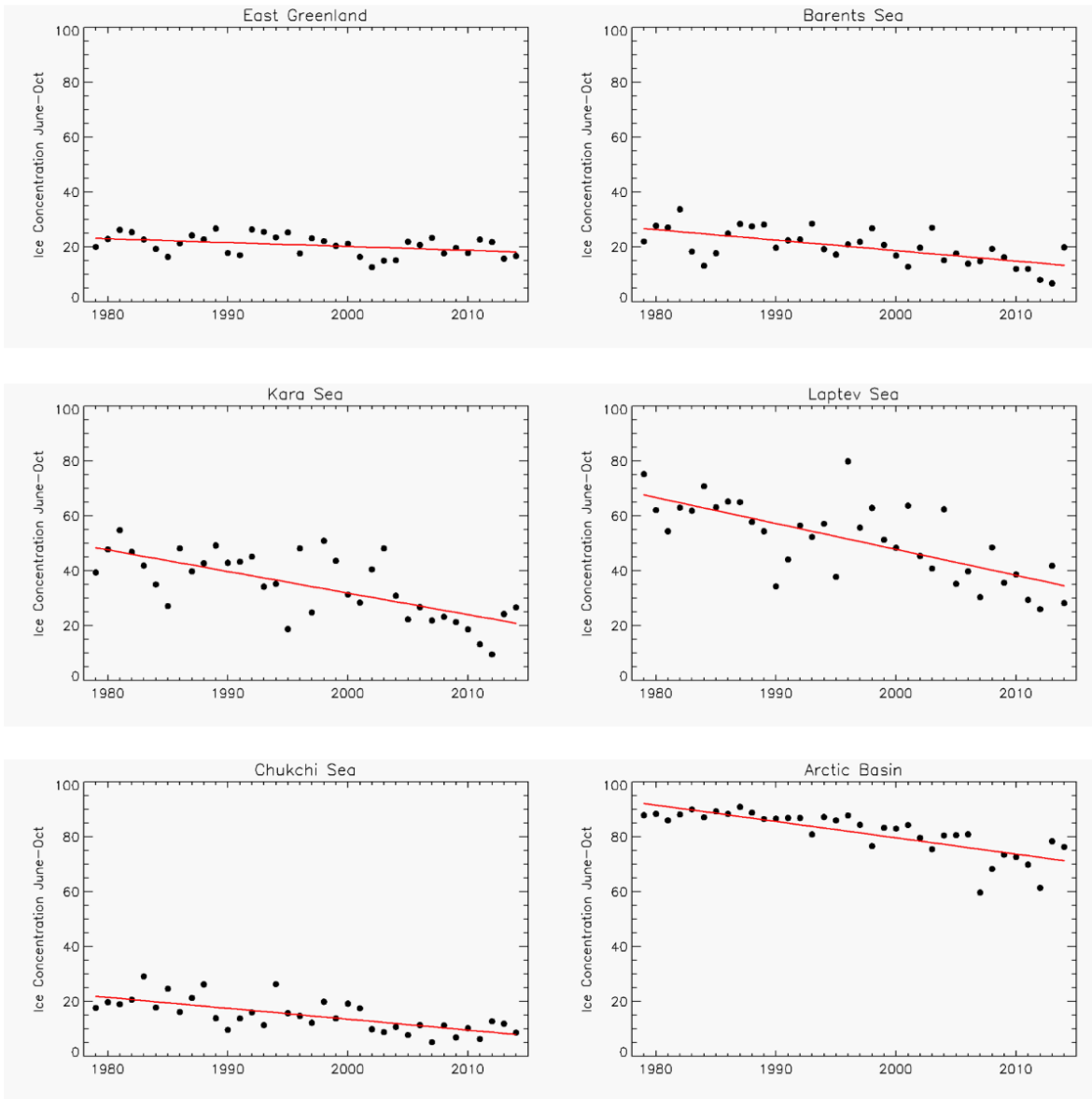


Figure S4 (continued). Summer (June through October) sea-ice concentration, by region.

60 **S5. Number of Ice-Covered Days**

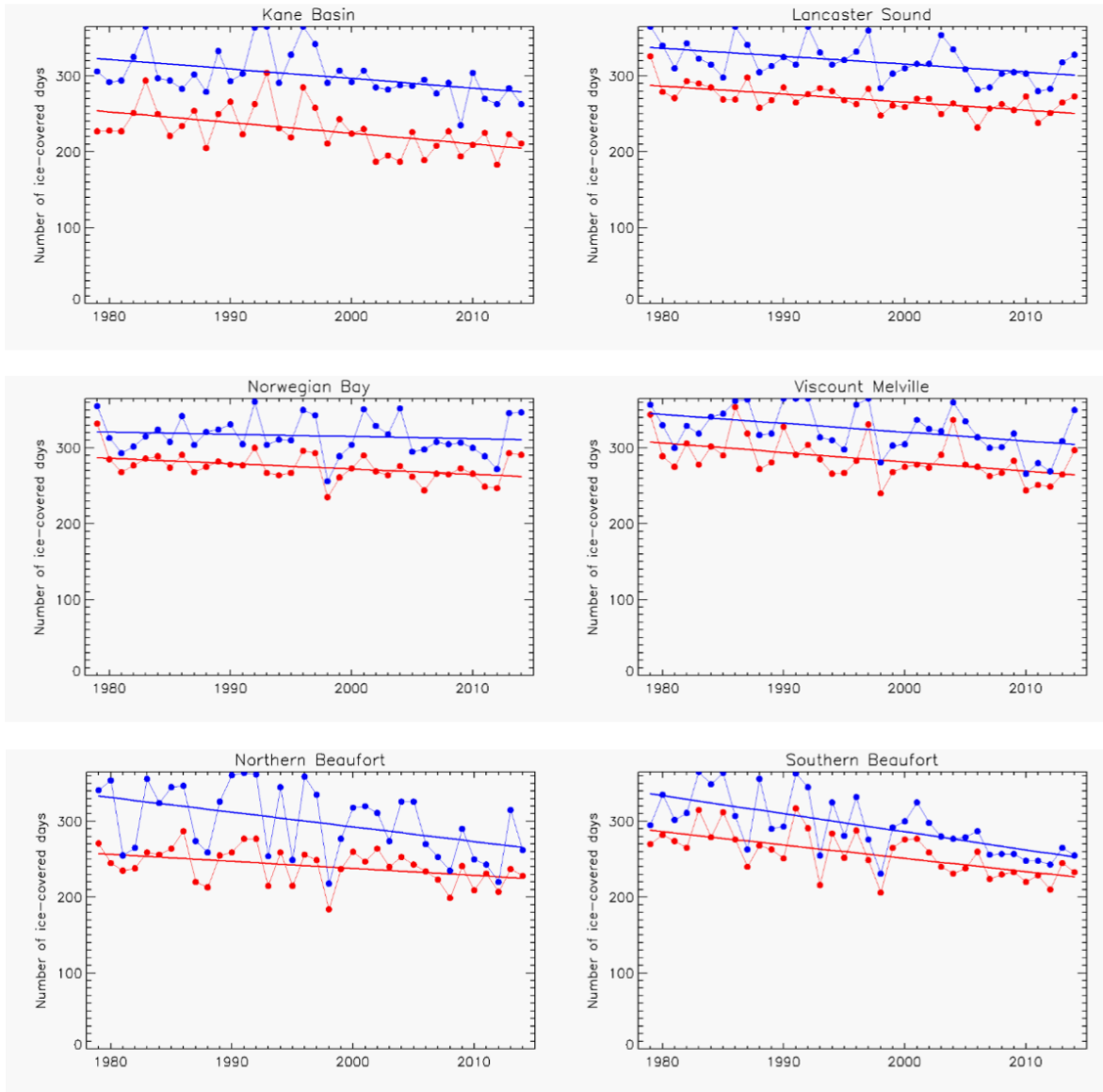


Figure S5. Number of ice-covered days per year, 1979-2014, by region (all depths). An ice-covered day is one in which the sea-ice area exceeds a threshold (defined in main text). Blue: number of ice-covered days above 15% threshold. Red: number of ice-covered days above 50% threshold. Least-squares lines are also shown. See Fig. 8 for Baffin Bay region. See Table 3 for trends.

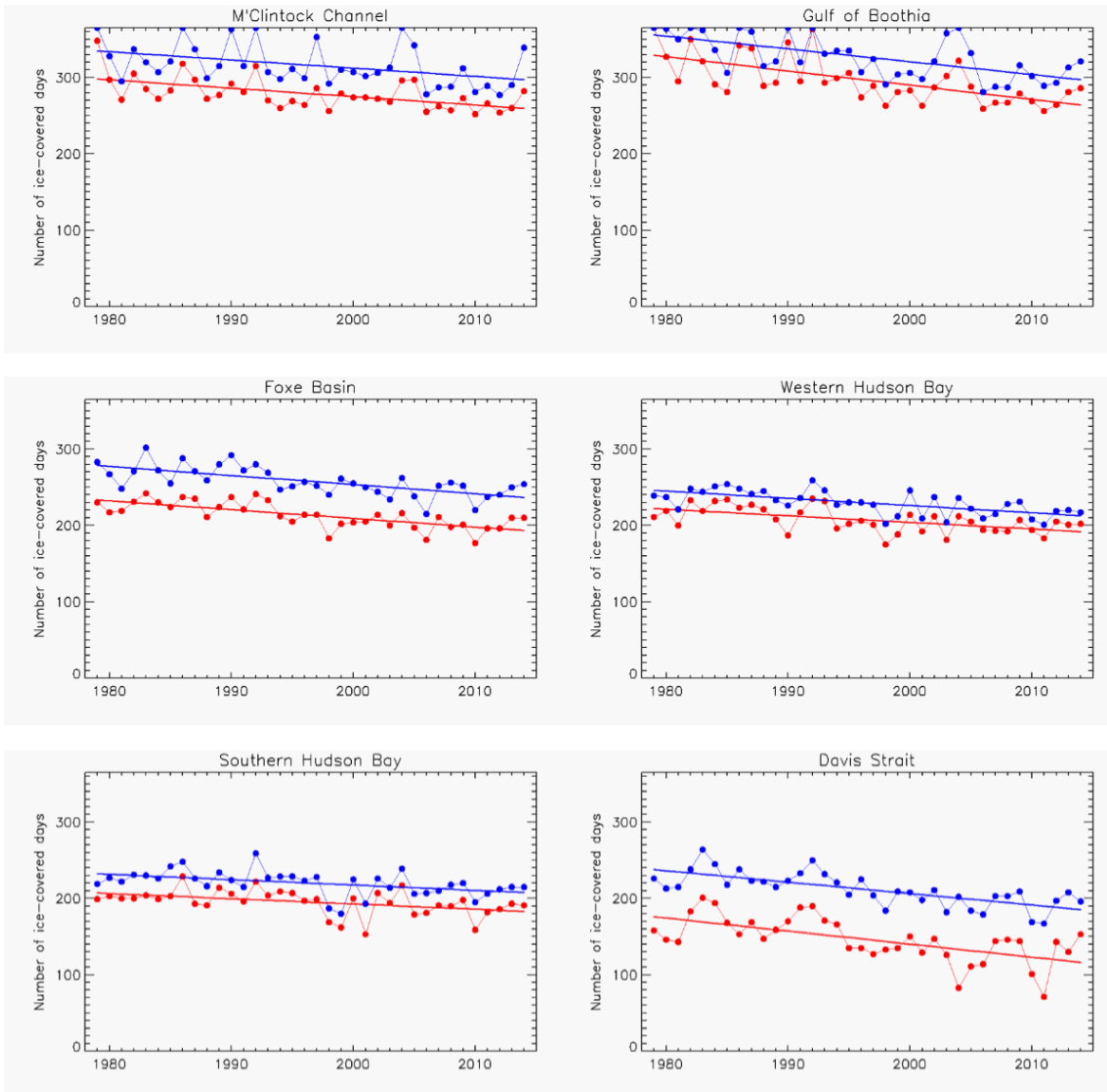


Figure S5 (continued). Number of ice-covered days, by region.

70

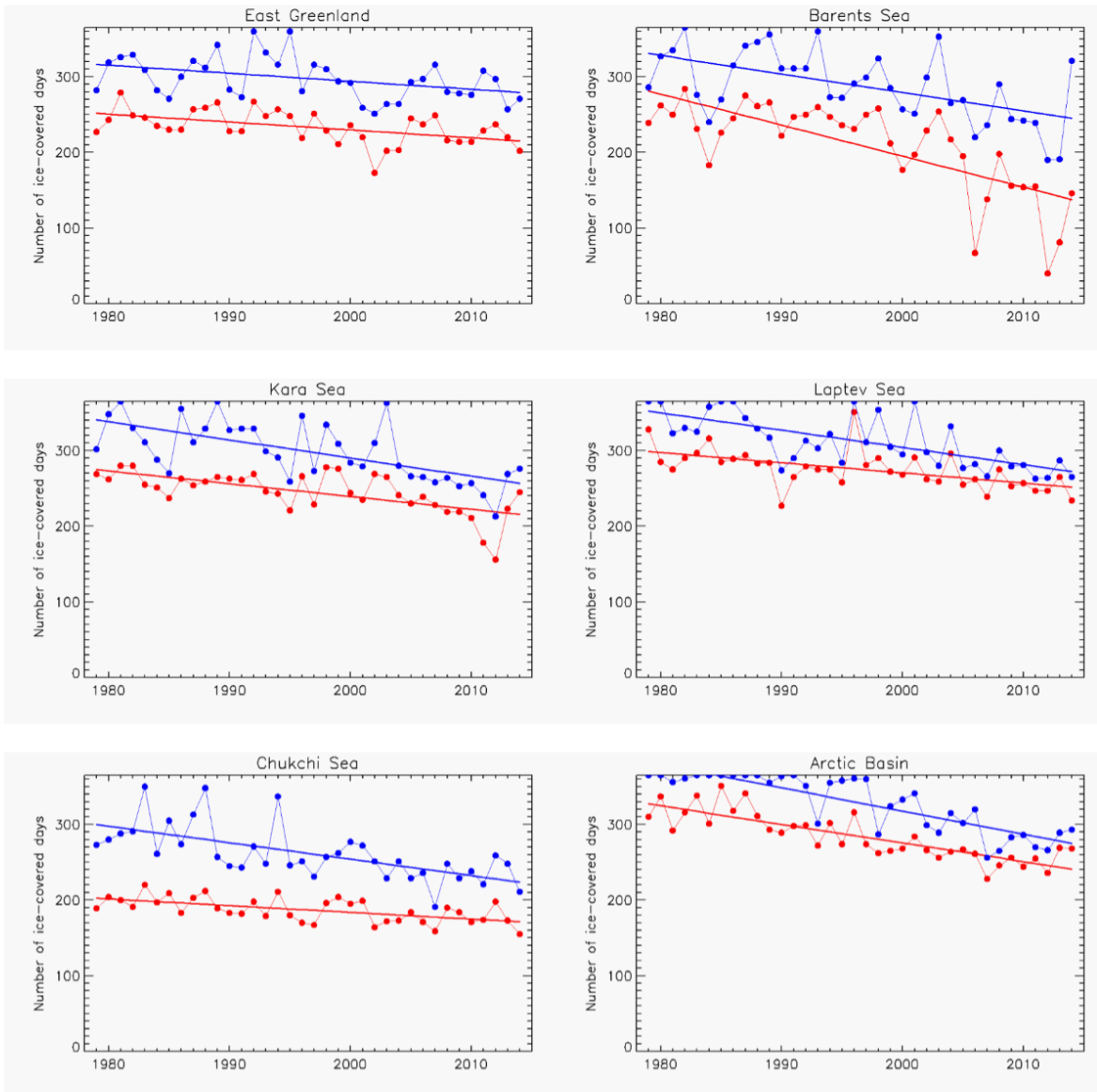


Figure S5 (continued). Number of ice-covered days, by region.